

[www.knights.uk.com](http://www.knights.uk.com)

CARDIFF

VALE

CAERPHILLY

BRISTOL



*Pontypriidd Street*





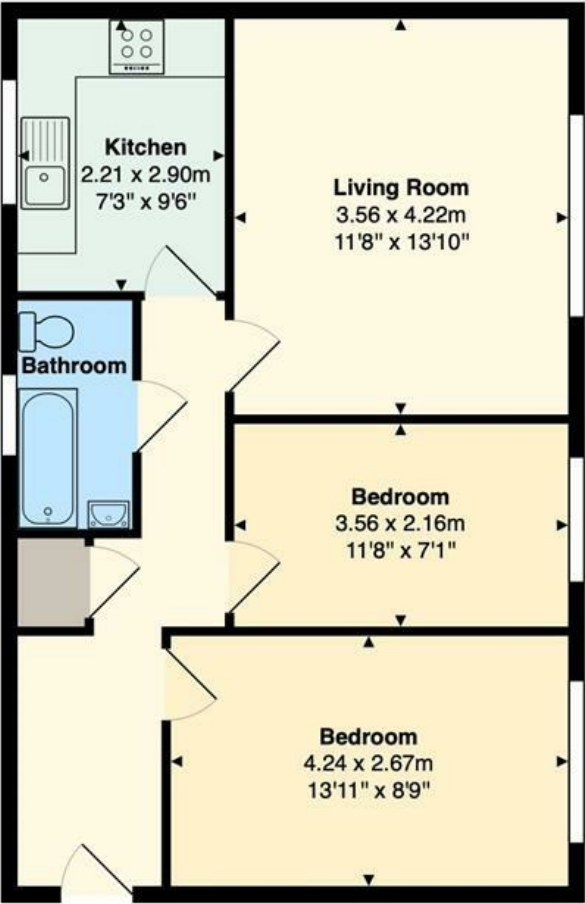
Comments by Miss Georgia Farr



**Property Specialist**  
**Miss Georgia Farr**  
Sales Negotiator

georgia@knights.uk.com

Davnic Close, Pontypridd Street, Barry



Total Area: 54.3 m² ... 585 ft²  
All measurements are approximate and for display purposes only



# Pontypridd Street

, Barry, CF63 2HT

£120,000



2 Bedroom(s)



1 Bathroom(s)



sq ft



Contact our  
***Knights Barry Branch***

01446 700222

Situated on Pontypridd Street in the popular town of Barry, this attractive ground floor flat offers an excellent opportunity for first-time buyers, small families, or investors alike. The property features two well-proportioned bedrooms and a modern bathroom, providing comfortable and practical living space.

The accommodation is centred around a spacious reception room, flooded with natural light from large windows that enjoy pleasant views across Barry and the communal gardens to the rear. The flat has been tastefully decorated throughout and has benefited from recent renovations, creating a fresh, contemporary feel and allowing a buyer to move straight in with minimal effort.

Ideally located, the property is within easy reach of local shops, schools, and public transport links, ensuring convenient access to the town centre and surrounding areas. An allocated parking space to the rear further enhances the appeal, offering a valuable addition in this well-connected location.

Combining modern living with a convenient setting, this property represents a fantastic opportunity whether you are stepping onto the property ladder or seeking a sound investment. Early viewing is highly recommended to appreciate all that this charming flat has to offer.



HALLWAY 4'08" / 2'05" (1.42m / 0.74m)

LIVING ROOM 13'10" x 11'03" (4.22m x 3.43m )

KITCHEN 9'06" x 7'03" (2.90m x 2.21m )

BEDROOM ONE 13'11" x 8'09" (4.24m x 2.67m )

BEDROOM TWO 7'01" x 11'03" (2.16m x 3.43m )

BATHROOM 4'0" x 8'0" (1.22m x 2.44m )

C A R D I F F

V A L E

C A E R P H I L L Y

B R I S T O L







